

1 2 3 4 5 6 7



Cross-section of  
FoamLime™ layers

- 1 / Adhesive FoamLime™
- 2 / Mechanical fastening
- 3 / FOAMGLAS® cellular glass
- 4 / Adhesive FoamLime™
- 5 / Malla Anti-álcali
- 6 / Adhesive FoamLime™
- 7 / FoamLime™ Base

# FoamLime™

[www.foamlime.com](http://www.foamlime.com)

GRUPO IBERCAL

[info@grupoibercal.com](mailto:info@grupoibercal.com)

[www.grupoibercal.com](http://www.grupoibercal.com)

# FoamLime™

THE DEFINITIVE  
**ETICS** SYSTEM



# FoamLime™ is efficient, economical, ecological and safe

Buildings with a facade using modern architecture need to be protected against fire, wind and harsh weather conditions. Efficient thermal insulation represents a considerable energy saving, making it essential today.

FoamLime™ is a fully mineral-based thermal insulation system that can be used to improve buildings and boost their energy classification and which combines the properties of FOAMGLAS® cellular glass panels with the natural hydraulic lime mortars of Ibercal™.

The result of the fusion of tradition and technology, FoamLime™ is the outcome of years of innovation and development by the Ibercal Group and US multinational Pittsburgh Corning Europe to obtain an external thermal-insulation system capable of reducing a building's environmental footprint while delivering on sustainability principles.

FoamLime™ integrates thermal insulation and cladding in a single system to comprise the envelope of new-build properties or to restore existing buildings. The system eliminates major temperature fluctuations in the master wall, reducing stress and any danger of the formation of cracks in claddings due to expansions and contractions. This extends the building's service life and maintains the facade value.

# FoamLime™ Properties

FoamLime™ is the most comprehensive overall ETICS system, guaranteeing high-performance, long-lasting insulation that is safe, non-damaging to human health or the environment and maintenance-free.

## Energy saving

FoamLime™ creates climatically well-protected environments, reducing a building's energy demands year-round.

## Unchangeable

FoamLime™ includes FOAMGLAS®, an inorganic safety insulation of cellular glass which has proven its effectiveness over more than 50 years. With its millions of hermetically sealed glass cells, FOAMGLAS® insulation is the ideal type of insulating material. Due to the material's structure, the vapour barrier is already "built in". FOAMGLAS® insulation is 100% waterproof and vapour-tight, ensuring that its thermal properties remain unchanged for life.

## Safe

The cell geometry of FOAMGLAS® insulation gives it extraordinary compressive strength, even under long-term loads. Its dimensional stability (no shrinking, no swelling, no deformation), acid resistance and resistance to attacks by fungi, bacteria, gnawing animals, insects and plagues means it will not change over time. Unlike other insulation materials, FOAMGLAS® does not rot.

## Fire-resistance

FoamLime™ is fully mineral-based and classified with a Euroclass A1 reaction to fire performance. It is non-combustible, does not release smoke, does not contribute to fire and produces no burning droplets or sparks.

## Ecological and sustainable

The FoamLime™ system significantly reduces environmental impacts, has an excellent eco-balance and delivers on sustainability principles.

## Mechanical resistance and structural stability

FoamLime™ provides sound water tightness faced with physical (vibrations, wind and the freeze-thaw cycle) and chemical attacks (diluted alkalis, rain and acidic salts etc) and ultraviolet and infrared rays from the sun.

## FoamLime™ compared to other ETICS systems

FoamLime™ convincingly combines economy with ecology, offering an energy balance and positive emissions; its service life comes in above the average of other systems on the market and its insulation properties remain intact for the whole of the building's life, doing away with the need for costly and premature restoration work. Project engineers choose FoamLime™ because these characteristics set it apart and make it a special and unique ETICS system. The FoamLime™ system also enables all sorts of finishes, textures, colours and abatement systems, adapting to the aesthetic requirements of each new-build or restoration project.

## EPH DRY Technology

The durability of the FoamLime™ system, continuously exposed to the elements, depends, to a large extent, on the degree of humidity. To properly protect both the system and the underlying materials, the set of parts must be water-repellent. To guarantee the durability of FoamLime™, the Ibercal Group has included EPH DRY technology in all the system components.

## Excellent damp protection

Dry facades prevent the appearance of fungi and algae. The average time a facade remains dry each year is increased when the mortar that clads it is treated with EPH DRY. The perfect water-repellence of the FoamLime™ system can be seen through the formation of drops.

## Mortar is allowed to breathe

All effective cladding should prevent damp from entering, without hampering the mortar's ability to breathe. The excellent permeability of lime mortar means that damp in the form of water vapour is evacuated to the outside, keeping the insulation material dry.



# Finishes

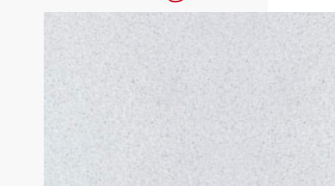
In terms of finishes, the FoamLime™ system is no obstacle and adapts to the aesthetic requirements of each new-build or restoration project enabling all types of finishes, textures and colours.

As a part of the final decoration, FoamLime™ can be painted or plastered in silicate paint or clad with ceramic tiles, exposed brick or natural stone tiles, lime stucco or micro-cements that imitate surfaces such as corten steel, concrete and so on.

## Paint



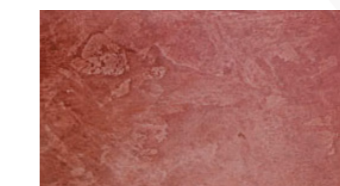
## Grouting



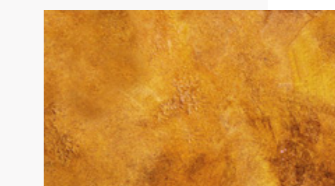
## Plaster



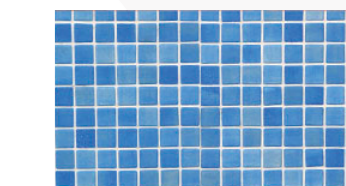
## Micro cement



## Corten steel



## Porcelain



## Natural stone



## Brick

